

# Study Guide 18

Name \_\_\_\_\_

## REPRODUCTION

**Section 18.3 Reproduction in Animals** *In your textbook, read about fertilization.*

**Circle the letter of the choice that best completes the statement.**

1. In animals, sperm are produced from cells of
  - a. ovaries.
  - b. testes.
  - c. gametes.
  - d. males.
  
2. Animals that have both male and female reproductive organs are called
  - a. gametes.
  - b. earthworms.
  - c. earthworms or clams.
  - d. hermaphrodites.
  
3. Sexual reproduction in most worms occurs
  - a. outside the female.
  - b. inside the female.
  - c. in water.
  - d. inside the male.
  
4. Sexual reproduction in dogs occurs
  - a. inside the male.
  - b. outside the male.
  - c. in storage organs.
  - d. inside the female.
  
5. An example of an adaptation which ensures that fertilization can occur is the
  - a. storage of eggs and sperm in a dry environment.
  - b. storage of live sperm within the female earthworm.
  - c. release of eggs before the release of sperm.
  - d. release of eggs after the release of sperm.

**For each animal named in Column A, write the letter in Column B of the adaptation made to ensure fertilization.**

### Column A

\_\_\_\_\_6. frog

\_\_\_\_\_7. earthworm

\_\_\_\_\_8. insect

\_\_\_\_\_9. salmon (female)

### Column B

a. lays from 2000 to 10 000 eggs

b. fertilization is internal

c. storage organs keep sperm alive over time

d. courtship behavior stimulates release of male and female gametes simultaneously

# Study Guide 18

Name \_\_\_\_\_ **REPRODUCTION**

## Section 18.3 Reproduction in Animals continued

*In your textbook, read about the 'estrous cycle and human reproduction.*

**For each statement below, write true or false.**

- \_\_\_\_\_ 10. The time during which male dogs produce sperm is known as estrus.
- \_\_\_\_\_ 11. Hormones control the production and release of eggs and sperm.
- \_\_\_\_\_ 12. At the peak of the estrous cycle, the female's eggs are released by the ovary and cannot be fertilized.
- \_\_\_\_\_ 13. The release of an immature egg from the follicle within the ovary is called ovulation.

**Complete each statement.**

14. In what part of the human female do eggs develop? \_\_\_\_\_
15. What part of the human male surrounds the place where sperm are produced?  
\_\_\_\_\_
16. How does fertilization occur in humans? \_\_\_\_\_  
\_\_\_\_\_

*In your textbook, read about the menstrual cycle.*

**Label the parts of the diagram below. Use these choices:**

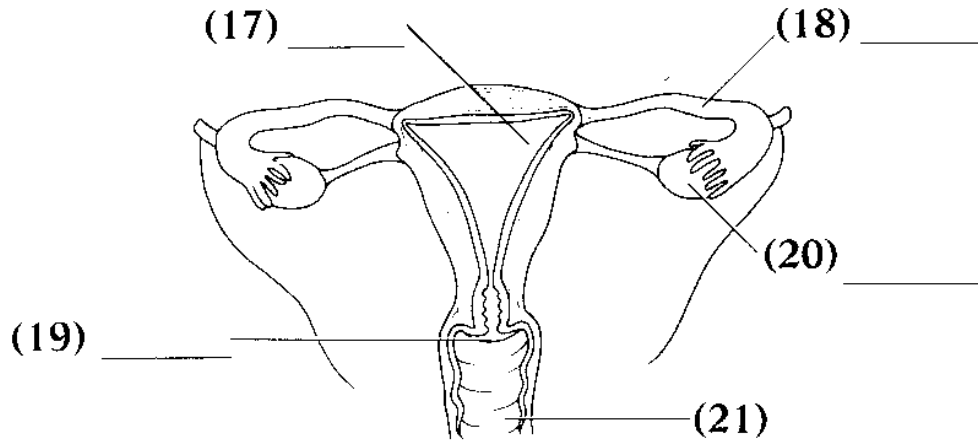
uterus

ovary

cervix

vagina

oviduct



Name \_\_\_\_\_

## REPRODUCTION,

### Chapter 18 Vocabulary

Match the definition in Column A with the correct term in Column B.

#### Column A

- \_\_\_\_\_ 1. structure within the ovary in which immature eggs develop
- \_\_\_\_\_ 2. chemical produced in one part of an organism that stimulates a response in another part
- \_\_\_\_\_ 3. method of asexual reproduction in animals
- \_\_\_\_\_ 4. structure leading from the cervix to the outside of the female's body
- \_\_\_\_\_ 5. replacement of missing body parts by means of mitosis
- \_\_\_\_\_ 6. structure in the pistil from which a seed eventually forms
- \_\_\_\_\_ 7. the last phase of the menstrual cycle
- \_\_\_\_\_ 8. food source that provides energy for the development of a new plant
- \_\_\_\_\_ 9. period of time during which the female of some mammal species is receptive to mating
- \_\_\_\_\_ 10. process of transfer of DNA by cell-to-cell contact
- \_\_\_\_\_ 11. sac containing the male testes
- \_\_\_\_\_ 12. organ in which a fertilized egg develops
- \_\_\_\_\_ 13. transfer of pollen from anther to stigma
- \_\_\_\_\_ 14. animal in which both male and female sex organs develop within the same individual
- \_\_\_\_\_ 15. asexual reproduction in plants
- \_\_\_\_\_ 16. combination of sperm and fluids

#### Column B

- a. vegetative reproduction
- b. conjugation
- c. semen
- d. hermaphrodite
- e. endosperm
- f. ovule
- g. budding
- h. regeneration
- i. pollination
- j. hormone
- k. menstruation
- l. uterus
- m. estrus
- q. vagina
- o. follicle
- p. scrotum

# Study Guide 18

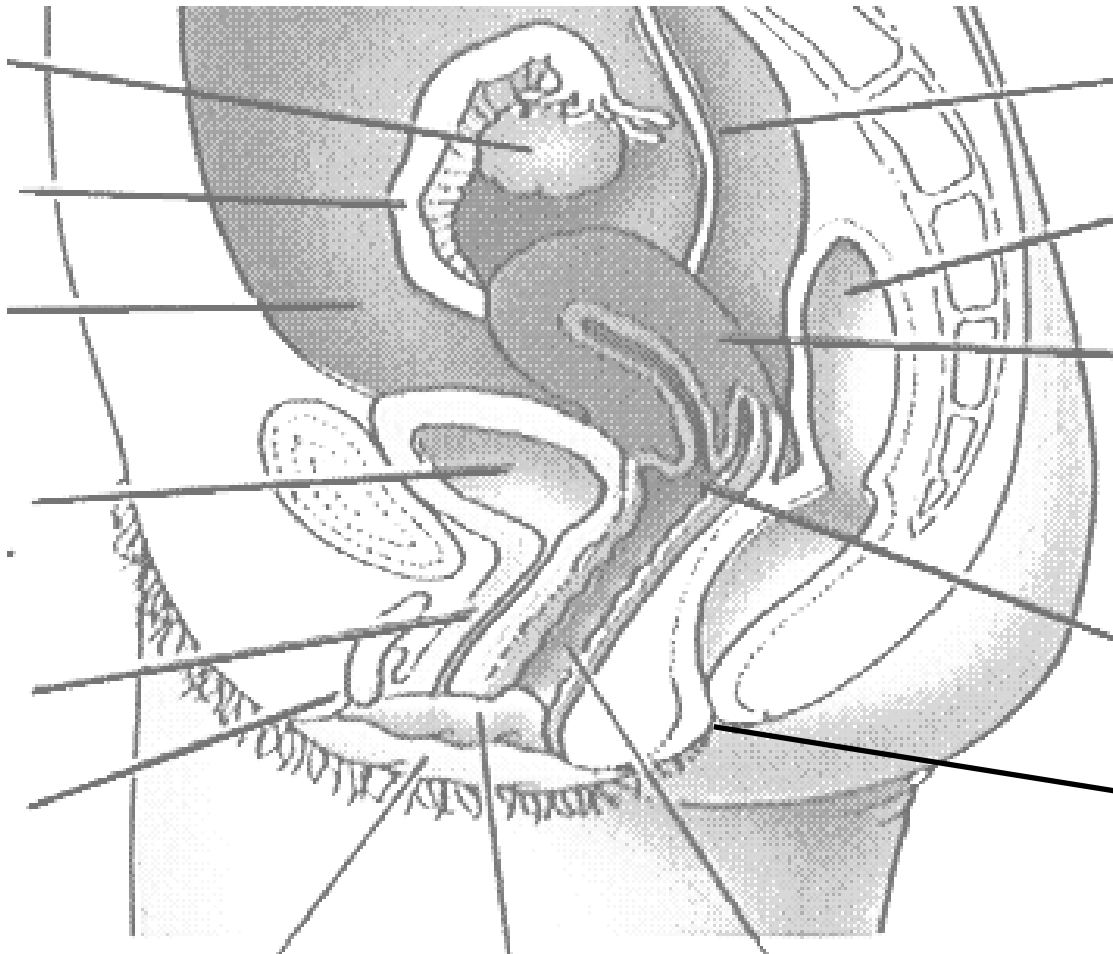
## REPRODUCTION

Name \_\_\_\_\_

**Fill in the following chart**

	Follicle Stage	Ovulation Stage	Corpus Luteum Stage	Menstruation Stage
Hormone Produced by Pituitary Gland				
Hormone Produced by Ovary				
What happens to the Uterine Lining				

**Label the diagram in the space provided.**



Name \_\_\_\_\_ **Reproduction**

**Label the diagram in the space provided.**

